

Weatherproof Luminous Gas Patio Heater

Specification

Input Range: 28,000 to 34,000 BTU/H

Length: 49"

Gas Type: NG (6.0"WC) or LP (10.0"WC)

Mounting Options:

Chains, Threaded Rod, Hangers,
or Optional Mounting Bracket

Housing:

SUS316L brushed or SUS304 high
temperature black paint

Electrical:

24V/60Hz External Transformer
24V Control Module
Starting Current 0.74 Amps
Operating Current 0.61 Amps

Features

- Stainless steel hexagonal hole decorative panel
- Weatherproof structure design
- Two-stage energy output regulation
- Special ceramic plates delivery ultra fast heating on start-up
- 0°-30° angle installation, flexible installation
- Black powder-coated SUS304 or brushed SUS316L
- Uniform heat distribution, long service life
- 24V waterproof circuit system
- ETL Certified to ANSI Z83.26 Standard for Outdoor Use



Keywarm

Weatherproof Luminous Gas Patio Heater



Technical Parameter

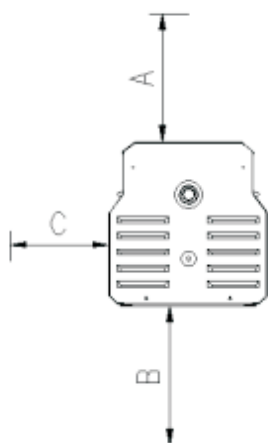
MODEL	BTU/H HIGH FIRE	BTU/H LOW FIRE	FUEL	HOUSING	APPROX. AREA HEATED	WEIGHT
HTCO-34-S	34,000	28,000	NG or LP	SUS316L BRUSH	9' x 9'	60.5 lbs
HTCO-34-B	34,000	28,000	NG or LP	SUS304 BLACK	9' x 9'	60.5 lbs

Clearance to Combustibles(Dimensions in inches)

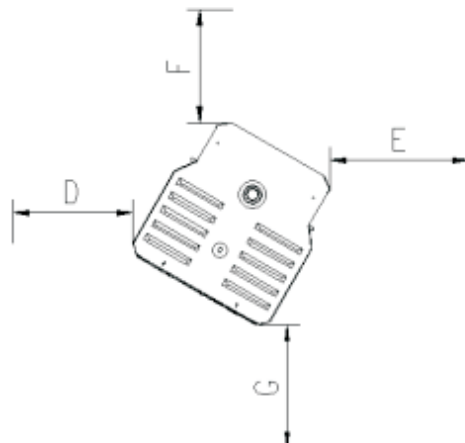
MODEL	A	B	C	D	E	F	G	H
HTCO-34-S	13	48	18	36	18	18	40	13
HTCO-34-B	13	48	18	36	18	18	40	13



0° Mounting Angle



30° Mounting Angle



www.keywarm.com
sales@keywarm.com